

Technical Note Using XP Service Pack 2 with Cameleon

1.1 What do I need to know about installing XP Service Pack 2 (XPSP2)?

The Microsoft website has information about the service pack. Go to <http://www.microsoft.com/windowsxp/sp2/default.mspx> for more information about installing Service Pack 2 for Windows XP.

Microsoft lists the 'Top Ten' reasons to upgrade to Service Pack 2:

1. **HELP PROTECT YOUR PC FROM HARMFUL ATTACHMENTS:** By alerting you to potentially unsafe attachments, Windows XP Service Pack 2 (SP2) helps guard your computer from viruses that can spread through Internet Explorer, Outlook Express, and Windows Messenger.
2. **IMPROVE YOUR PRIVACY WHEN YOU'RE ON THE WEB:** SP2 helps protect your private information by applying the security settings that guard your PC to the files and content downloaded using Internet Explorer.
3. **AVOID POTENTIALLY UNSAFE DOWNLOADS:** Internet Explorer download monitoring and the Internet Explorer Information Bar warn you about potentially harmful downloads and give you the option to block files that could be malicious.
4. **REDUCE ANNOYING POP-UPS:** Internet Explorer Pop-Up Blocker makes browsing the Internet more enjoyable by helping you reduce the unwanted ads and content that pop up when you're browsing the Web.
5. **GET FIREWALL PROTECTION FROM STARTUP TO SHUTDOWN:** The powerful, built-in Windows Firewall is now turned on by default. This helps protect Windows XP against viruses and worms that can spread over the Internet.
6. **TAKE CONTROL OF YOUR SECURITY SETTINGS:** The new Windows Security Center allows you to easily view your security status and manage key security settings in one convenient place.
7. **GET THE LATEST UPDATES EASILY:** Enhancements to Windows XP's Automatic Updates feature make it even easier to access Windows updates. Plus, new technology has been added to help dial-up customers download updates more efficiently.
8. **HELP PROTECT YOUR E-MAIL ADDRESS:** Improvements to Outlook Express help reduce unwanted e-mail by limiting the possibility of your e-mail address being validated by potential spammers.
9. **TAKE ACTION AGAINST CRASHES CAUSED BY BROWSER ADD-ONS:** The new Add-On Manager in Internet Explorer lets you easily view and control add-ons to reduce the potential for crashes and enjoy a more trouble-free browsing experience.
10. **GO WIRELESS WITHOUT THE HASSLE:** SP2 improves wireless support and simplifies the process of discovering and connecting to wireless networks in your home or on the road.

For the purposes of running XP with Cameleon version 4, the important updates are numbers 6 and 7 above: "Get firewall protection from startup to shutdown" and "Get the latest updates easily."

1.2 Installation

Installation of the Service Pack is simple:

1. Prior to installing, ensure that all Cameleon drivers and programs are shut down, and that no other applications are running.
2. Download and run the executable from Microsoft, or update automatically using Windows Update.
3. Once installed, reboot your machine.
4. Upon restarting, you will be prompted to turn on Automatic Windows Updates.
 - If your PC is connected to the internet and you wish to receive updates automatically from Microsoft, turn on automatic updates.
 - If you do not have a connection to the internet or wish to manually manage your PC, turn off automatic updates.
 - Many security installations do not provide a connection to the internet for security reasons; in this case, leave automatic updates turned off.

1.3 Firewall Protection

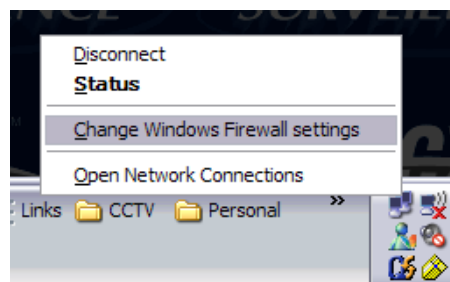
XP Service Pack 2 automatically turns on firewall protection for all your LAN adapters, including wireless connections, if present. This is to prevent unwanted connections from other computers. Unfortunately, this also blocks **wanted** connections from computers such as client-server and client-driver communications. Therefore each application must be unblocked, or firewall protection must be turned off before the Cameleon application will work with SP2. **Please discuss the following steps with your network administrator, if you have one.**

1.3.1 Disabling Firewall Protection

If your PC is not connected on a WAN or corporate network or has no exposure to the Internet, it is recommended that you disable firewall protection. To do so:

1. Right click on the Network icon in the system tray and select '**Change Windows Firewall settings**'

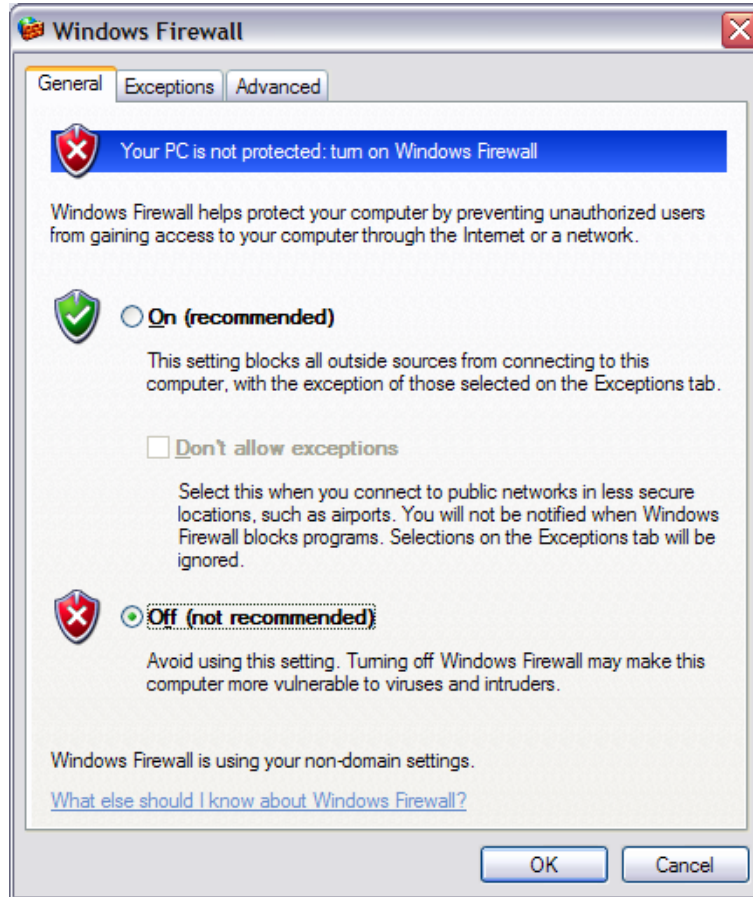
Figure 1.1 Accessing Windows firewall settings



Technical Note Using XP Service Pack 2 with Cameleon

2. On the firewall settings dialog box, click the **Off** radio button to disable firewall protection. Click **OK**.

Figure 1.2 Turning off firewall protection



1.3.2 Entering Exceptions

If your PC is connected on a WAN or corporate network and has exposure to the Internet, you may wish to leave firewall protection turned on. There are two ways of performing this task:

1. Run each component of the Cameleon software and 'unblock' that component when prompted by XP, as shown below.

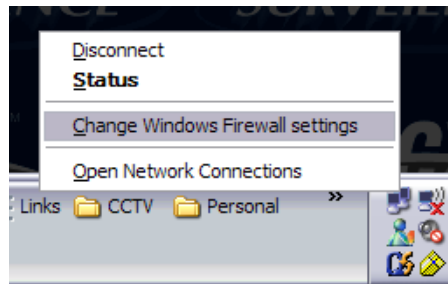
Technical Note Using XP Service Pack 2 with Cameleon

Figure 1.3 Unblocking Cameleon software components



2. Manually browse and enter in each component that is used by Cameleon in the firewall exception list. If you choose this option, do the following:
 - (a) Right click on the Network icon in the system tray and select '**Change Windows Firewall settings.**'

Figure 1.4 Accessing Windows firewall settings



- (b) Click on the exceptions tab. For each program repeat steps c through e.
- (c) Click **Browse** and find the component you wish to add. A complete list of components and their locations follows.

Technical Note Using XP Service Pack 2 with Cameleon

Figure 1.5 Adding exceptions to the Windows Firewall

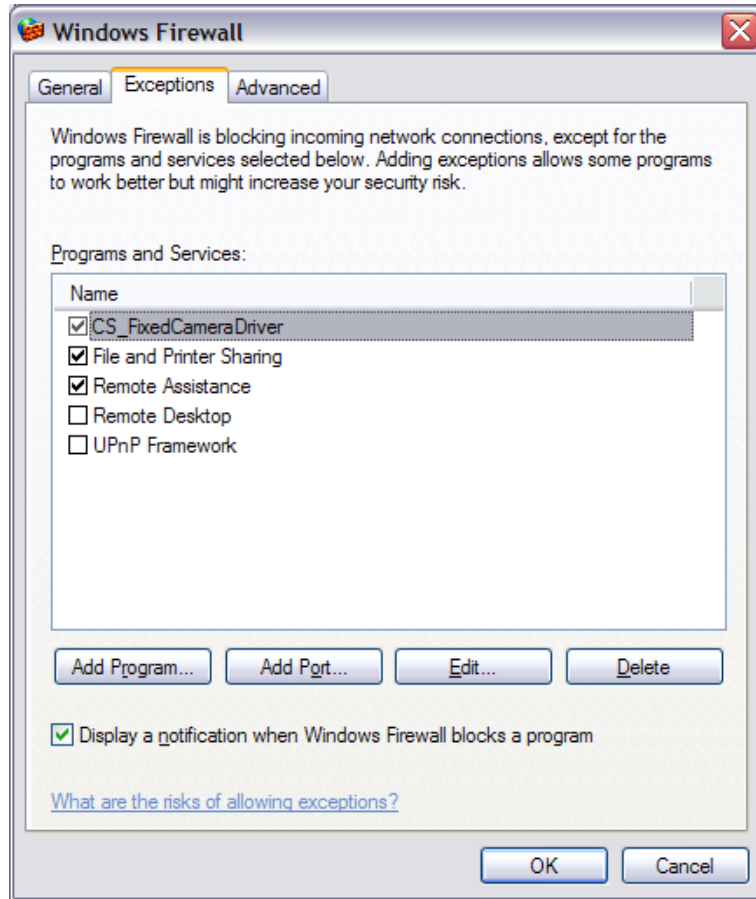


Table 1.1 Components installed with core Cameleon application and their locations

PROGRAM	FILENAME	DEFAULT DIRECTORY
Cameleon Server	CS_Server.exe	C:\Program Files\CS_ProgramFiles\
Cameleon Client	CS_Client.exe	C:\Program Files\CS_ProgramFiles\
Cameleon Server Thread Library	CS_ServerThreadLib.exe	C:\Windows\System32\CS_Components\
Cameleon Server Thread Library	CS_ClientThreadLib.exe	C:\Windows\System32\CS_Components\
Fixed Camera Driver	CS_FixedCameraDriver.exe	C:\Program Files\CS_ProgramFiles\
External Monitor Driver	CS_ExternalMonitorDriver.exe	C:\Program Files\CS_ProgramFiles\
Archive Server	Cs_ArchiveServer.exe	C:\Program Files\CS_ProgramFiles\
IP Monitor Driver	CS_IPMonitorDriver.exe	C:\Program Files\CS_ProgramFiles\

Technical Note Using XP Service Pack 2 with Cameleon

Table 1.1 Components installed with core Cameleon application and their locations

PROGRAM	FILENAME	DEFAULT DIRECTORY
Access Control Driver	CS_AccessControlDriverStartupNET.exe	C:\Windows\System32\CS_Components\COF\
	CS_AccessControlDriverServiceNET.exe	
Remote Desktop Server	CS_Remote DesktopServer.exe	C:\Program Files\CS_ProgramFiles\
Serial Output Driver	CS_SerialOutputDriverStartupNET.exe	C:\Windows\System32\CS_Components\COF\
	CS_SerialOutputDriverServiceNET.exe	

- (d) The 'scope' defaults to Any Computer which will permit any client or server to connect. Click **OK** to add the program to the list.
- (e) Additional component or drivers must be added to this list if installed later. If the **'Display a notification when Windows Firewall blocks a program'** is left checked you will be notified if you have missed a component that you use later on.

1.4 Additional Components

Every driver pack installs additional executables for use with the Cameleon server. Each of these must also be added to the list of firewall exceptions after a driver pack is installed. Check in the following two directories for new executables (files with the .exe extension):

- C:\Windows\System32\CS_Components\COF\
- C:\Program Files\CS_ProgramFiles\