

1.1 Overview

Cameleon is currently incompatible with Microsoft .NET Framework 2.0. In order to successfully install Cameleon on a PC, .NET Framework 2.0 must be removed, and .NET Framework 1.1 installed in its place.

The following steps are necessary:

- **REMOVE .NET 2.0:** Remove the .NET Framework 2.0 from the system.
- **INSTALL .NET 1.1:** Download and install the .NET Framework 1.1.
- **INSTALL CAMELEON:** Install Cameleon on the system.
- **INSTALL .NET 2.0:** If necessary, download and install the .NET Framework 2.0.

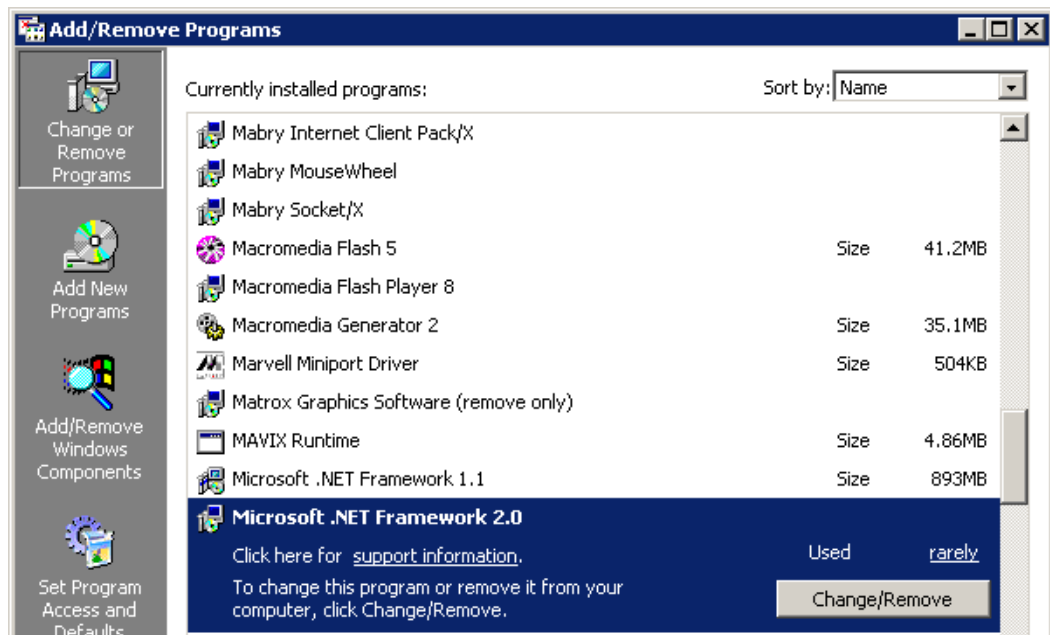
These steps are explained in detail below in Section 1.2 - *Instructions* (p.5).

1.2 Instructions

To remove Microsoft .NET Framework 2.0 and install .NET Framework 1.1, follow these steps:

1. **NAVIGATE TO ADD/REMOVE PROGRAMS:** On the PC, navigate to **Start > Settings > Control Panel > Add/Remove Programs**.
2. **LOCATE MICROSOFT .NET FRAMEWORK:**

Figure 1.1 .NET Framework in Add/Remove Programs

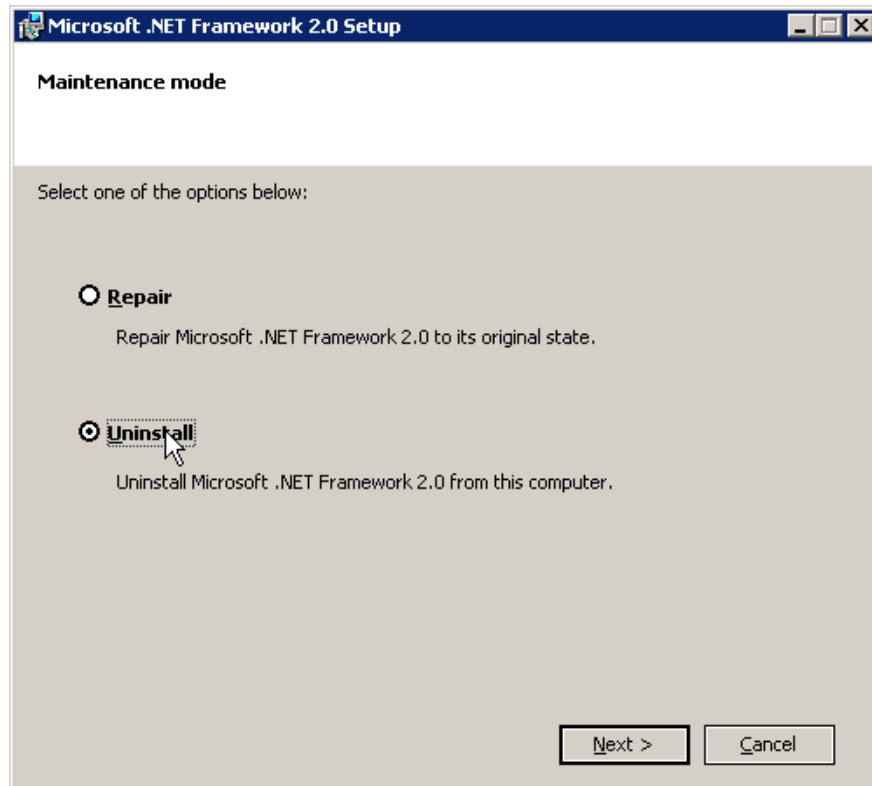


Technical Note Installing Cameleon on a PC with .NET Framework 2.0 Installed

Scroll down until you locate **Microsoft .NET Framework 2.0**. If you have multiple .NET frameworks installed, only select the 2.0 Framework.

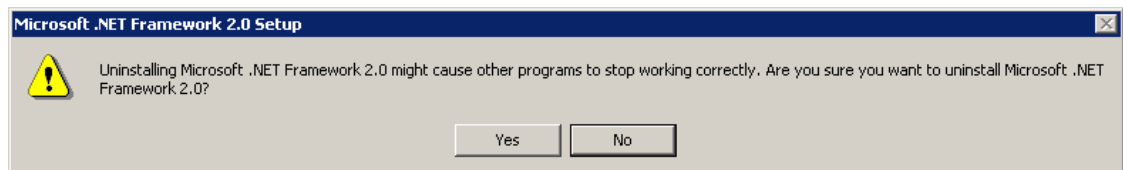
3. **REMOVE FRAMEWORK:** Press **Change/Remove**. The Microsoft .NET Framework 2.0 Setup dialog box will appear.

Figure 1.2 Microsoft .NET Framework 2.0 Setup Dialog Box



4. **UNINSTALL:** Select the **Uninstall** radio box. Press **Next >**. You will be prompted with the following warning:

Figure 1.3 Uninstallation Warning



Press **Yes**. .NET Framework 2.0 will be uninstalled. If you are prompted to restart your machine, do so now.

5. **DOWNLOAD .NET 1.1:** If .NET 1.1 is already installed skip steps 5 and 6.

Technical Note Installing Cameleon on a PC with .NET Framework 2.0 Installed

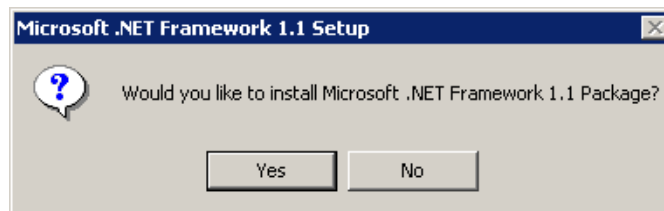
If .NET 1.1 has not been installed then either enter the following URL directly into your web browser to download .NET 1.1 from the web or download it directly from your Cameleon CD:

<http://www.microsoft.com/downloads/details.aspx?FamilyId=262D25E3-F589-4842-8157-034D1E7CF3A3&displaylang=en>

Press **Download**. Save the executable to a location of your choice.

6. **RUN .NET 1.1 INSTALLER:** Run the .NET 1.1 installer from the location you downloaded it to. You will be prompted with the following warning:

Figure 1.4 Installation Warning



Press **Yes**. .NET Framework 1.1 will be installed. If you are prompted to restart your machine, do so now.

7. **INSTALL CAMELEON:** Install the Cameleon software. For instructions, refer to the *Software Installation Guide* included on the CD-ROM or in the downloaded Cameleon package. If .NET 2.0 was not removed before installing Cameleon the following error dialog will display during Cameleon installation:

Figure 1.5 .NET Error Dialog



8. **REINSTALL .NET 2.0:**

✳ **NOTE:** Perform this step only if absolutely necessary. For example, other software on your system may require .NET 2.0, necessitating both Frameworks 1.1 and 2.0. If you do follow this step, future updates to Cameleon will require uninstalling .NET Framework 2.0 again and then reinstalling it



Technical Note Installing Cameleon on a PC with .NET Framework 2.0 Installed

- (a) **DELETE OR MOVE .NET FRAMEWORK 1.1 INSTALLER:** Either delete the .NET Framework 1.1 installer you previously downloaded or move it to a subfolder.
- (b) **DOWNLOAD .NET FRAMEWORK 2.0:** Either enter the following URL directly into your web browser to download .NET 1.1 from the web or download it directly from your Cameleon CD:

<http://www.microsoft.com/downloads/details.aspx?familyid=0856eacb-4362-4b0d-8edd-aab15c5e04f5&displaylang=en>

Press **Download**. Select a download path of your choice.
- (c) **RUN THE .NET FRAMEWORK 2.0:** Navigate to the path where you downloaded the installer and run it.

