

1.1 About Command Line Switches

The Cameleon server and client's executable files, CS_Server.exe and CS_Client.exe respectively, as well as all device drivers, can be run with a number of command line switches that alter how the server, client and drivers operate. These switches are reserved for special functions that are outside of the purview of regular users.

Section 1.2 - *Configuring Command Lines Switches* (p.5) provides instructions on how to configure the server and client applications as well as device drivers to execute using a command line switch.

Section 1.3 - *Command Lines Switches* (p.7) lists the server, client, and device driver command line switches and their functions.

⊛ **NOTE:** This technical note only covers command line switches included with Cameleon version 4.4.3.0 and earlier. If you are using a newer version of Cameleon, refer to the *Command Line Switches* appendix in the Cameleon Server Manual for an updated list.

1.2 Configuring Command Lines Switches

There are two ways to run the client and server applications and device drivers using a command line switch:

- **RUN:** Using the Run function of Windows, the server, client or device driver executable can be run with a command line switch. This approach is useful when the switch only has to be used once, for example as part of a troubleshooting endeavor. See Section 1.2.1 - *Using the Windows Run Function* (p.5).
- **CREATE A SHORTCUT:** Create a shortcut for either CS_Server.exe or CS_Client.exe or the device driver's executable file, usually of the format CS_DriverName.exe or CS_DriverName.exe. Configure the shortcut to run the executable with the command line switch. This approach is useful when the switch is to be run every time the client, server or driver is launched. See Section 1.2.2 - *Creating a Shortcut* (p.6).

1.2.1 Using the Windows Run Function

1. **NAVIGATE TO RUN:** Launch the Windows Start bar and navigate to **Run...** Its location depends on the version of Windows you are using as well as how you have configured the Windows task bar.
2. **ENTER LOCATION OF EXECUTABLE:** In the **Open:** field, type in the location of the client, server or device driver executable, or navigate to the appropriate location using the **Browse...** button. The default directory where the executables are located is C:\Program Files\CS_ProgramFiles\.
3. **ADD COMMAND LINE SWITCH:** At the end of the executable's location, enter a slash ("/") followed by the command line switch. For example, enter C:\Program Files\CS_ProgramFiles\CS_Server.exe /noFTPsecurity.

4. **RUN:** Press **OK**. The client or server application will run with the command line switch inputted.

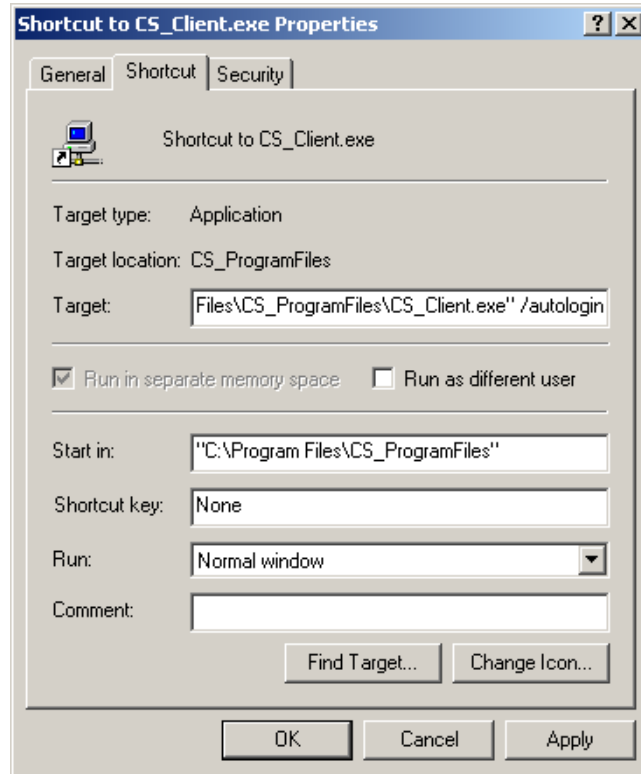
1.2.2 Creating a Shortcut

A shortcut can be created for the client or server application or device driver and configured to run the application with a command line switch.

These instructions use the client's executable (CS_Client.exe). To configure a shortcut for the server, follow the same instructions for CS_Server.exe. To configure a shortcut for a device driver, follow the same instructions for the driver's Startup executable.

1. **NAVIGATE TO THE CAMELEON FOLDER:** Using Windows Explorer, navigate to the executable. The default folder contained the client and server applications is C:\Program Files\CS_ProgramFiles\.
2. **CREATE A SHORTCUT:** Right click on CS_Client.exe or CS_Server.exe and select **Create Shortcut**. The shortcut, named **Shortcut to CS_Client.exe** or **CS_Server.exe**, will be automatically placed in the same folder.
3. **EDIT THE COMMAND LINE:** Right click on the shortcut and select **Properties**. The Shortcut to CS_Client.exe (or CS_Server.exe or CS_DeviceDriverStartup.exe) Properties dialog box will open. In the **Target** field enter the command line after the entire target string. For example, "C:\Program Files\CS_ProgramFiles\CS_Client.exe" / autologin. The slash ("/") must always precede the command line switch you wish the application to run with and the entire command line switch must be entered **outside** of the quotation marks the target string rests in.

Figure 1.1 Shortcut to CS_Client.exe Properties dialog box



4. **ACCEPT CHANGES:** Click **OK**. When the Cameleon client or server application or device driver is run from this shortcut the command line switch will be used.
5. **LAUNCH FROM SHORTCUT:** Configure the PC the executable runs on to launch the application from the shortcut you have created rather than directly from the CS_Client.exe, CS_Server.exe or CS_DeviceDriverStartup.exe application.

1.3 Command Lines Switches

Table 1.1 lists the command line switches that can be used with the server application, their impact, and the section of the server manual in which they are discussed.

Table 1.2 lists the command line switches that can be used with the client application, their impact, and the section of the server manual in which they are discussed.

Table 1.3 lists the command line switches that are common to all device drivers, the impact of the switches, and the section of the server manual in which they are discussed.

Table 1.1 CS_Server.exe command line switches

SWITCH AND SYNTAX	IMPACT	MANUAL SECTION
/noftpsecurity	Causes the server to run without FTP security functionality. Required to use Cameleon client applications older than version 4.3 with a Cameleon server application of version 4.3 or newer.	Section 30 - <i>FTP Sites</i>
/nowarnings	All normally occurring error messages within the server application are suppressed.	N/A

Table 1.2 CS_Client.exe command line switches

SWITCH AND SYNTAX	IMPACT	MANUAL SECTION
/autologin	Configures clients to login automatically as the default user if the client is configured to support autologin in the server.	Section 7 - <i>Clients, Custom Windows, and Canvases</i>

Table 1.3 Device Driver command line switches

SWITCH AND SYNTAX	IMPACT	MANUAL SECTION
/exxx.xxx.xxx.xxx:yyyy	Configures a device driver to be run at IP address xxx.xxx.xxx.xxx and listening port yyyy. Circumvents Configure Driver dialog box. If a device driver executable shortcut using this command line switch is placed in the Windows Startup folder, the driver will be launched at this IP and port when the machine is booted.	Section 5 - <i>Device Drivers</i>